



**Jennifer Wu, PhD**  
*Northwestern University*

Department of Urology, Microbiology-Immunology

**AREA(S) OF FOCUS:**

**Advancing new cancer immunotherapy approaches**

The Wu lab is using state-of-the-art genetic preclinical models to develop immunotherapies that overcome tumor-induced immunosuppression.

**KEY RESEARCH AREAS:**

**Discovery of cancer biomarkers**

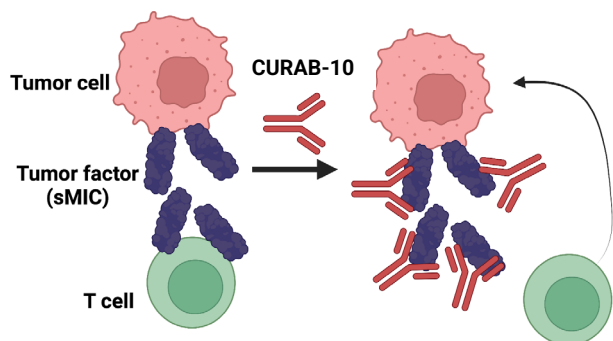
Identify biomarkers to discern between slow-growing or aggressive prostate tumors and guide patient therapy.

**Modifying tumor-induced mechanisms**

Target key tumor stealth tactics to activate patient anti-tumor immune responses.

**Reducing the harmful effects of immunotherapy**

Investigating the mechanisms underlying immunotherapy-induced colitis to improve treatments and reduce the need to stop immunotherapy.



**ENTREPRENEURIAL SUCCESS:**



CanCure LLC (dba. CanZx Biotherapeutics) is exploring ways to treat cancers that do not have immunotherapy options.

Of particular interest are cancers not responsive to immune checkpoint inhibitors (e.g., prostate cancer).

The pipeline includes:

- Antibodies against cancer proteins (sMIC) that impair the anti-tumor activity of immune cells.
- The candidate antibody targeting sMIC (CURAB-10) has shown to reduce tumor size & prolong survival in vivo. Human studies are in early stages.

Over \$1.5M of grant funding raised.