



**Olufunmilayo I. Olopade, MD**

*University of Chicago*

Department of Medicine

Center for Clinical Cancer Genetics and Global Health

**AREA(S) OF FOCUS:**

**Renovating the clinical landscape for aggressive cancers**

Dr. Olopade is using genetic information to develop early detection, treatment, and prevention strategies in communities with high risks for breast cancer.

**KEY RESEARCH AREAS:**

**Genomic landscape of breast cancer**

Identify biomarkers to predict cancer progression for patients at diagnosis or upon recurrence.

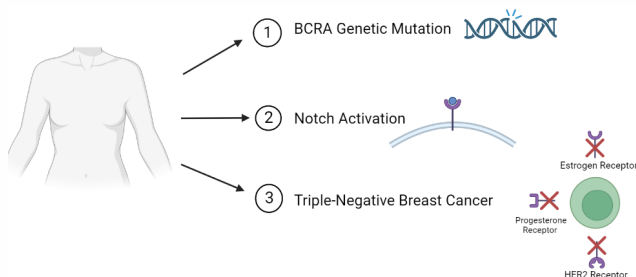
**Diversity & inclusion in cancer clinical care**

Champion initiatives to diversify clinical trial populations, building upon her research of tumor progression in women of African descent.

**Triple negative breast cancer**

Support clinical development of novel treatment for triple negative breast cancer.

**Early Breast Cancer Screening**



**ENTREPRENEURIAL SUCCESS:**



CancerIQ is a tech platform working to revolutionize the detection & treatment of cancer within the healthcare system

Cancer IQ utilizes patient family history, genetic profile, lifestyle, & other factors to offer a personalized end-to-end solution that includes screening, risk assessment, patient navigation, care plan management, & provider analytics.

Platform capabilities include:

- Genetics program: Provide healthcare systems with a streamlined process for genetic testing, counseling, & follow-up.
- Breast cancer center: Unify providers and patients within an accessible digital center to provide cancer risk assessment and improve treatment adherence.
- Preventative care: Integrate patient genetic, hereditary, lifestyle, and adherence factors to develop personalized cancer screening & prevention plans

Series B (2022) - \$14 million and raised \$20 million overall.